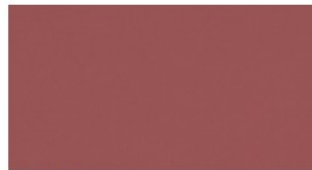


CARTELLA COLORI
colours samples card



COD. 03
ROVERE | OAK



COD. 33
AMARANTO | AMARANTH



COD. 69
BIANCO BR. | BR. WHITE



COD. 04
ROVERE GREY | GREY OAK



COD. 44
STONE GREY | STONE GREY



COD. 06
NOCE PAVIA | PAVIA WALNUT



COD. 55
ANTRACITE | ANTHRACITE



COD. 99
BIANCO SATINATO | SATINED WHITE

ABBINAMENTI COLORI
matching colours

COLORI LEGNI
wooden colours

		ROVERE	ROVERE GREY	NOCE PAVIA	BIANCO BR.	AMARANTO	STONE GREY	ANTRACITE
		<i>oak</i>	<i>grey oak</i>	<i>pavia walnut</i>	<i>br. white</i>	<i>amaranth</i>	<i>stone grey</i>	<i>anthracite</i>
COMPONENTI components		Cod. 03	Cod. 04	Cod. 06	Cod. 69	Cod. 33	Cod. 44	Cod. 55
SCRIVANIE - TAVOLI RIUNIONI desktop - meeting tables	PIANI tops	◊	◊	◊	◊			
	STRUTTURA structure	◊	◊	◊	◊		◊	◊
TAVOLI DA SALOTTO coffe tables	PIANO E STRUTTURA top and structure	◊	◊	◊	◊			
CASSETTIERE E MOBILI DI SERVIZIO pedestal and service units	FRONTALI - TOP - SCHIENA fronts - top - back panel	◊	◊	◊	◊			
	STRUTTURA structure			◊	◊		◊	◊
CONTROMOBILI e COMPLEMENTI credenzas and complements	STRUTTURA E TOP structure and top	◊	◊	◊	◊		◊	◊
	ELEMENTO LIBRERIA bookcase element				◊	◊	◊	◊
	ANTINE doors	◊	◊	◊	◊	◊	◊	
MOBILI CONTENITORI cabinets	FRONTALI fronts	◊	◊	◊	◊			
	STRUTTURA structure			◊	◊		◊	◊
TOP E FIANCHI FINALI tops and final side panels		◊	◊	◊	◊			