

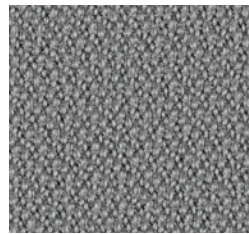
CAT_A

POLI

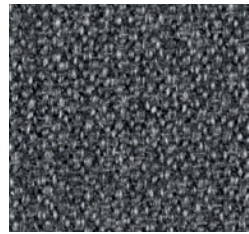
100% Polipropilene F.R.
Peso: 250 gr/m²
Martindale 50.000 cicli
Ignifugo classe 1

100% Polypropylene F.R.
Weight: 250 gr/m²
Martindale 50.000 turns
Fire-retardant class 1 (one)

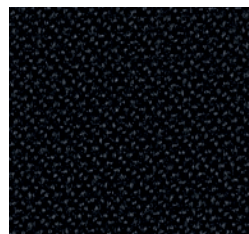
100% Polypropylene F.R.
Poids: 250 gr/m²
Martindale 50.000 cycles
Ignifuge classe 1



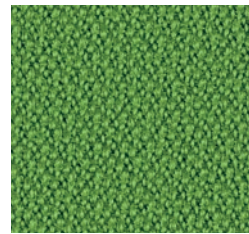
475 - Grigio
Grey | Gris



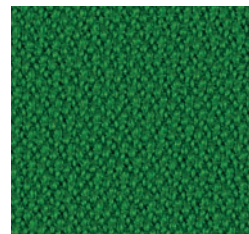
476 - Grigio Melange
Melange Grey | Gris Mélange



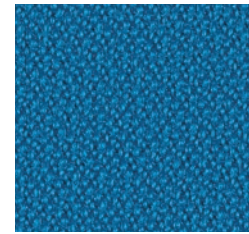
477 - Nero
Black | Noir



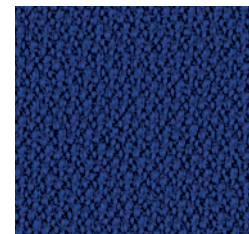
478 - Verde Chiaro
Light Green | Vert Clair



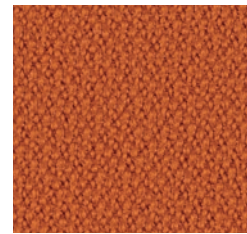
479 - Verde
Green | Vert



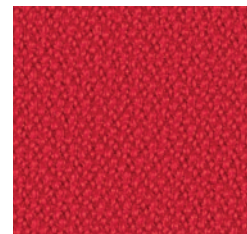
480 - Azzurro
Azure | Azur



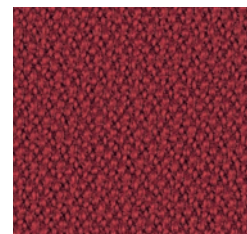
481 - Blu
Blue | Bleu



482 - Arancio
Orange | Orange



483 - Rosso
Red | Rouge



484 - Bordeaux
Bordeaux | Bordeaux

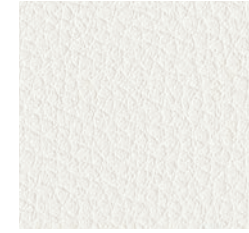
CAT_B

ECO-PELLE

Composizione fibrosa:
65% Poliestere
35% Cotone
Composizione globale:
85% PVC
10% Poliestere
5% Cotone
Peso: 600 gr/m²
Martindale 51.200 cicli
Ignifugo classe 1

Fibrous composition
65% Polyester
35% Cotton
Global composition:
85% PVC
10% Polyester
5% Cotton
Weight: 600 gr/m²
Martindale 51.200 turns
Fire-retardant class 1 (one)

Composition fibreuse:
65% Polyester
35% Coton
Composition globale:
85% PVC
10% Polyester
5% Coton
Poids: 600 gr/m²
Martindale 51.200 cycles
Ignifuge classe 1



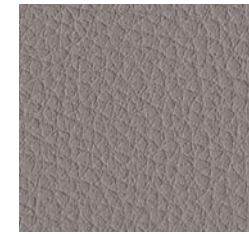
503 - Bianco
White | Blanc



507 - Avorio
Ivory | Ivoire



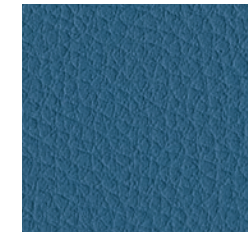
511 - Verde Acido
Acid Green | Vert Acide



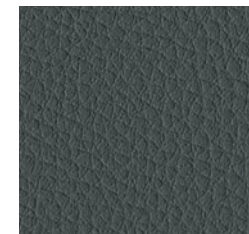
504 - Grigio
Grey | Gris



508 - Tabacco
Tobacco | Tabac



513 - Avio
Navy Blue | Bleu Aviateur



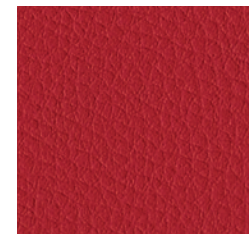
505 - Ardesia
Slate | Ardoise



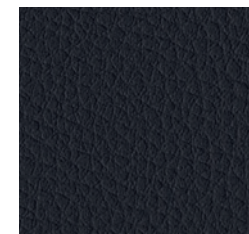
509 - Marrone
Brown | Marron



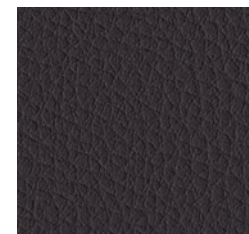
512 - Muschio
Moss Green | Vert Mousse



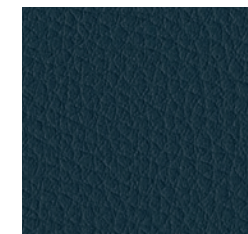
516 - Rosso
Red | Rouge



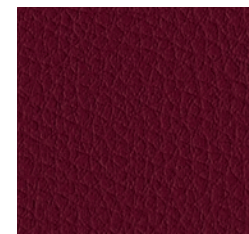
506 - Nero
Black | Noir



510 - Testa di Moro
Dark Brown | Marron Foncé



514 - Blu
Blue | Bleu



517 - Granata
Garnet | Grenat