



Composizione / Composition / Composition

**100% PL**



Peso / Weight / Poids

**310 g/m<sup>2</sup>**



Resistenza alla luce / Light fastness / Résistance à la lumière

**6 (EN ISO 105 B02)**



Resistenza allo sfregamento / Fastness to rubbing / Solidité au frottement

**35.000 cycles Martindale**



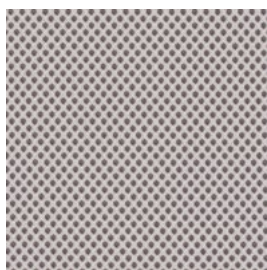
Resistenza al fuoco / Fire retardancy / Réaction au feu

**UNI 9174**

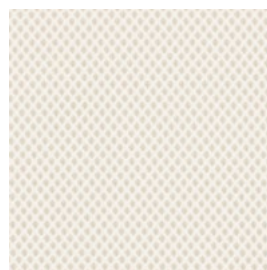
**UNI 8456**

**CLASSE 1 IM\***

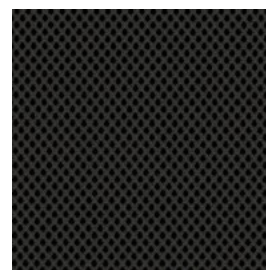
**\*a seconda dei modelli (vedi elenco omologazioni)**



**RS 0003**



**RS 0002**



**RS 0001**



**RS 0004**