

LEATHER LN



Composizione / Composition / Composition
Pelle bovina / Bovine leather / Cuir bovin

Spessore / Thickness / Épaisseur
0,90/1,00 mm

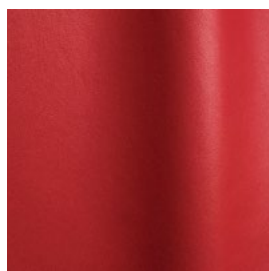
Grandezza media / Average size / Dimension moyenne
4,40 m²



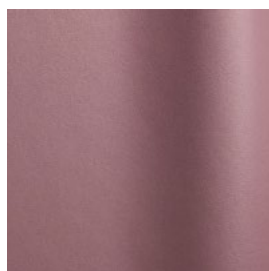
Resistenza alla luce / Light fastness / Résistance à la lumière
5 (EN ISO 105 B02)



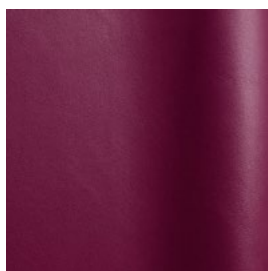
Resistenza allo sfregamento / Fastness to rubbing / Solidité au frottement
500 dry rubs/battute a secco
150 wet/rubs



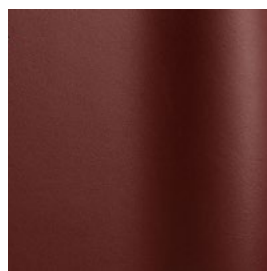
LN 2511



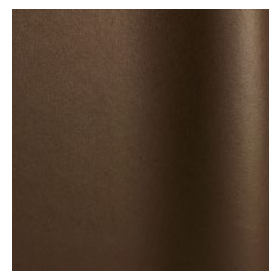
LN 7704



LN 7701



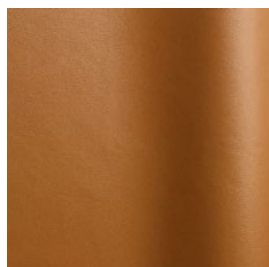
LN 5484



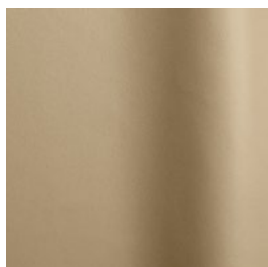
LN 2557



LN 6688



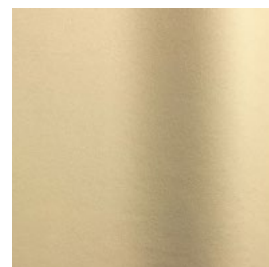
LN 5478



LN 3396



LN 2264



LN 5432



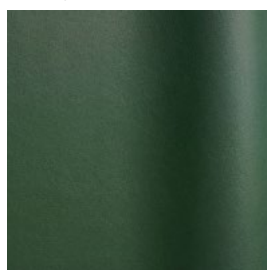
LN 6400



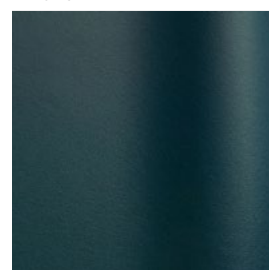
LN 2535



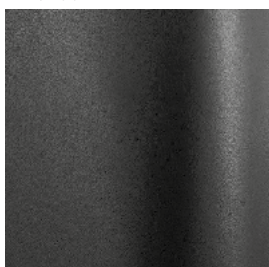
LN 3360



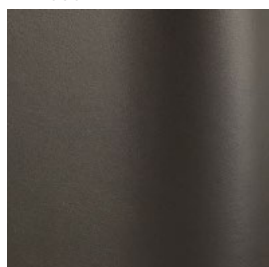
LN 2561



LN 0443



LN 1000



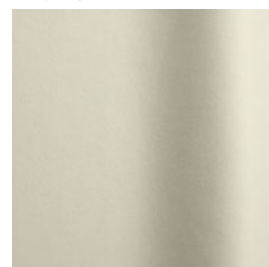
LN 2500



LN 2527



LN 2523



LN 2200