

Scheda tecnica

Technical specifications
Fiche technique
Technisches Datenblatt
Ficha técnica

slalom

- Base Ø mm 244 x h. in acciaio verniciato a polveri epossidiche
- Base partenza a muro mm. 160 x 244 x 6 h. in acciaio verniciato a polveri epossidiche
- Cilindro Ø mm 75 x 120 h. in alluminio spazzolato anodizzato
- Montante Ø mm 32 a 4 vie 90° in alluminio
- Pannelli in PVC 7/10 ignifughi
- Pannelli in metallo microforato 6/10 verniciati a polveri epossidiche
- Pannelli flessibili in legno 14/10 ignifughi
- Elemento di giunzione ovale in ABS trasparente
- Elemento di giunzione cilindrico in ABS trasparente
- Ruote piroettanti
- Piani in legno verniciato trasparente

- Base Ø inch. 9.60 x 0.24 h. (Ø mm 244 x h. 6) in steel, epoxy coated
- Wall start base inch. 6.30 x 9.60 x 0.24 h. (mm. 160 x 244 x 6 h) in epoxy coated steel
- Cylinder Ø inch. 2.95 x 4.72 h. (Ø mm 75 x h. 120) in steel, epoxy coated
- Upright Ø inch. 1.26 (Ø mm 32), 4-way, 90° in anodised brushed aluminium
- Panels in fireproof PVC 7/10
- Panels in micro-perforated metal 6/10, epoxy coated
- Flexible panels plated in wood 14/10, fireproof
- Oval jointing element in transparent ABS
- Cylindrical jointing element in transparent ABS
- Revolving castors
- Plywood table top plated and with transparent painting

- Base Ø 244 mm x h. 6 mm. en acier vernis en poudres époxy
- Base départ mur mm. 160 x 244 x 6 h en acier verni poudre époxy
- Cylindre Ø 75 mm x h. 120 mm. en acier vernis en poudres époxy
- Montant Ø 32 mm à 4 voies, 90°, en aluminium brossé anodisé
- Panneaux en PVC 7/10 ignifuges
- Panneaux en métal microperforé 6/10, vernis en poudres époxy
- Panneaux flexibles en bois 14/10 ignifuges
- Élément de jonction ovale en ABS transparent
- Élément de jonction cylindrique en ABS transparent
- Roulettes pivotantes
- Panneaux en bois contre-plaqué stratifié et peinture transparente

- Unterteil Ø 244 mm x H. 6 mm. aus Stahl, epoxybeschichtung
- Unterteil Wandbeginn mm. 160 x 244 x 6 h aus Stahl
Epoxybeschichtung
- Zylinder Ø 75 mm x H. 120 mm. aus Stahl, epoxybeschichtung
- 4-Wege-Pfosten Ø 32 mm, 90°, aus eloxiertem, satiniertem Aluminium
- feuerhemmende PVC-Bespannung 7/10
- Feuerhemmende flexiblen Bespannung aus Holz 14/10
- Mikroloch-Bespannung aus Metall 6/10, epoxybeschichtung
- Ovale Verbindungselement aus transparentem ABS
- Zylindrisches Verbindungselement aus transparentem ABS
- Drehbaren rollen
- Bespannung aus Sperrholz MULTISTRATO und Transparent Lackierung

- Base Ø 244 mm x Al. 6 mm. en acero pintado epoxi
- Base salida de pared mm. 160 x 244 x 6 altura en acero pintado epoxi
- Cilindro Ø 75 mm x Al. 120 mm. en acero pintado epoxi
- Montante Ø 32 mm de 4 vías, 90°, en aluminio cepillado anodizado
- Paneles en PVC 7/10 ignifugos
- Paneles en metal microtaladrado 6/10 pintado epoxi
- Paneles flexibles chapados de madera ignifugos
- Elemento de unión oval en ABS transparente
- Elemento de unión cilíndrico en ABS transparente
- Ruedas pivotantes
- Sobres de mesa de madera aglomerada multiestrato contrachapada y pintada transparente

Legenda

Cd Codice - Code - Code - Code - Código
Dm Dimensioni - Dimensions - Dimensions - Maße - Dimensiones
Co Colori - Colours - Coloris - Farben - Colores
St Struttura - Structure - Structure - Gestell - Estructura
Ba Base - Base - Base - Unterteil - Base

Tabella colori

colours chart
gamme de coloris
farbmustertafel
tabla colores

Metallo - Metal - Metal - Metall - Metal

GG Grigio Goffrato - Embossed grey - Gris Gauté - Grau granuliert - Gris Gofrado
NG Nero Goffrato - Embossed black - Noir Gauté - Schwarz granuliert - Negro Gofrado

PVC

FT Fumé Trasparente - Transparent Smoke Grey - Fumé Transparent - transparent Dunkelgrau - Gris Humo Transparente
GR Grigio - Grey - Gris - Grau - Gris
OP Opaline - Opaline - Opalin - Opalglas - Opalescente
TR Trasparente - Transparent - Transparent - Transparent - Transparente

AR Arancio - Orange - Orange - Orangerfarben - Anaranjado
BL Blu cobalto - Blue "cobalt" - Bleu cobalt - Kobaltblau - Azul cobalto

NE Nero - Black - Noir - Schwarz - Negro
RO Rosso rubino - Red "rubino" - Rouge rubis - Rot Rubin - Rojo rubi
VA Verde acido - Green "acid" - Vert acide - Grèllgrün - Verde ácido

AZC Azzurro Cristallo - Crystal Blue - Bleu cristal - Kristallblau - Azul cristal

BI Bianco - White - Blanc - Weiss - Blanco

BA Bianco Arena - Sand white - Blanc sable - Sand Weiss - Blanco arena

VL Verde Laguna - Lagoon green - Vert lagune - Gruen Lagune - Verde laguna

S1 Righe bianche - White lines - Lignes blanches - Weiße Linien - Lineas blancas

S2 Multicolor

S3 Mix colorati - Mix color - Mélange de couleurs - Farb-Mix - Mezcla de color

S4 Mix neutri - Mix neutral - Mélange neutre - Mix Neutral - Mezcla neutral

S5 Graphical grigio - Graphical gray - Graphique gris - Grafischen grau - Gráfico gris

S6 Graphical marrone - Graphical brown - Graphique brun - Grafischen braun - Gráfico marron

S7 Murrine

Legno - Wood - Bois - Holz - Madera

AS Acero sbiancato - Bleached Maple - Érable Blanche - Ahorn gebleicht - Arce Blanquecido

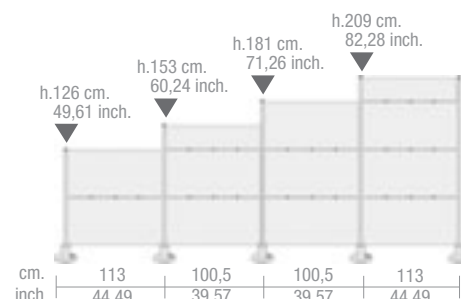
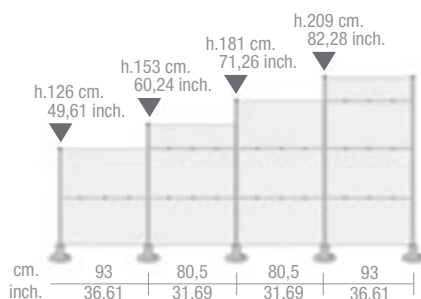
CH Ciliegio - Cherry - Cerisier - Kirschbaum - Cerezo

WE Wengé

La modularità

Measures
La modularité
Die Modularität
La modularidad

Ba = Ø cm 25- inch 9.84



slalom

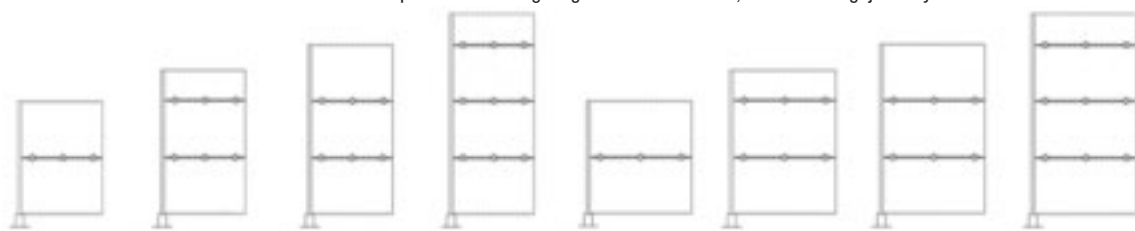
sistema divisorio modulare
modular partition system
système de séparation modulaire
Modulares Trennsystem
sistema divisorio modular

montanti in alluminio satinato a 4 vie, a 90° - pannelli in PVC ignifugo o metallo verniciato, microforato e legno
satin aluminium 4-way 90° uprights - fireproof PVC panels or painted metal, perforated metal and wood
montants à 4 voies en aluminium satiné - panneaux en PVC ignifuge ou en métal peint, métal microperforé et bois
Pfosten aus satiniertem Aluminium 4 Wege 90° - Bespannung aus feuerhemmendem flexiblem PVC oder lackiertem Metall, Mikrolochmetall und Holz
montantes de 4 vías 90° en aluminio satinado - paneles en PVC ignifugo o metal barnizado, metal microagujerado y madera



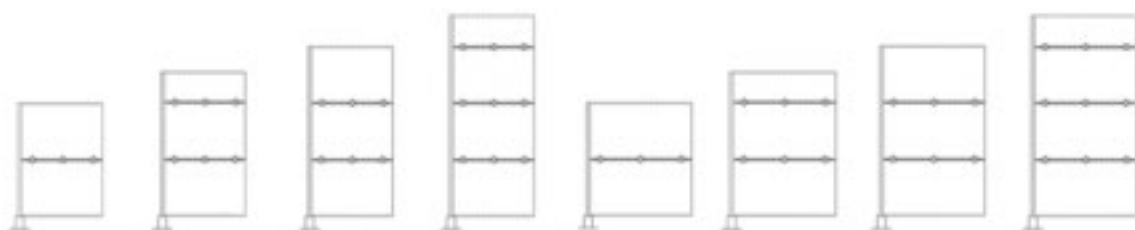
materiale flessibile 0°-360°
flexible material

PVC
BI-GR-OP-TR-FT ▲



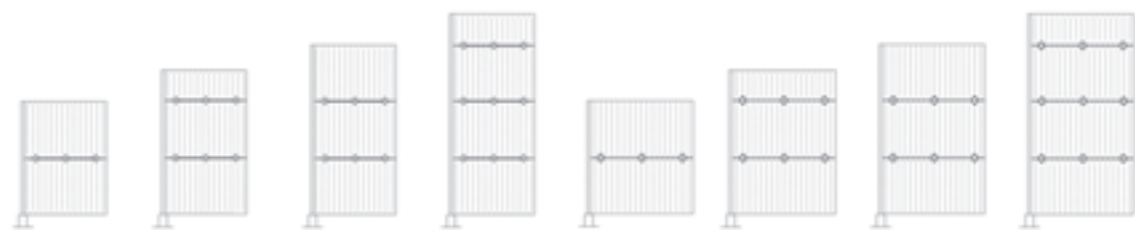
<i>Cd</i>	SL8P2	SL8P2/1	SL8P3	SL8P3/1	SL10P2	SL10P2/1	SL10P3	SL10P3/1
<i>Dm cm</i>	93 x h126	93 x h153	93 x h181	93 x h209	113 x h126	113 x h153	113 x h181	113 x h209
<i>Dm inch</i>	36,61 x h49,61	36,61 x h60,24	36,61 x h71,26	36,61 x h82,28	44,49 x h49,61	44,49 x h60,24	44,49 x h71,26	44,49 x h82,28
<i>Ba</i>	NG-GG	NG-GG	NG-GG	NG-GG	NG-GG	NG-GG	NG-GG	NG-GG

METAL 0°-3°
GG-NG



<i>Cd</i>	SL8M2	SL8M2/1	SL8M3	SL8M3/1	SL10M2	SL10M2/1	SL10M3	SL10M3/1
<i>Dm cm</i>	93 x h126	93 x h153	93 x h181	93 x h209	113 x h126	113 x h153	113 x h181	113 x h209
<i>Dm inch</i>	36,61 x h49,61	36,61 x h60,24	36,61 x h71,26	36,61 x h82,28	44,49 x h49,61	44,49 x h60,24	44,49 x h71,26	44,49 x h82,28
<i>Ba</i>	NG-GG	NG-GG	NG-GG	NG-GG	NG-GG	NG-GG	NG-GG	NG-GG

METAL MICROFORATO 0°-20°
MICROPERFORATED
GG-NG

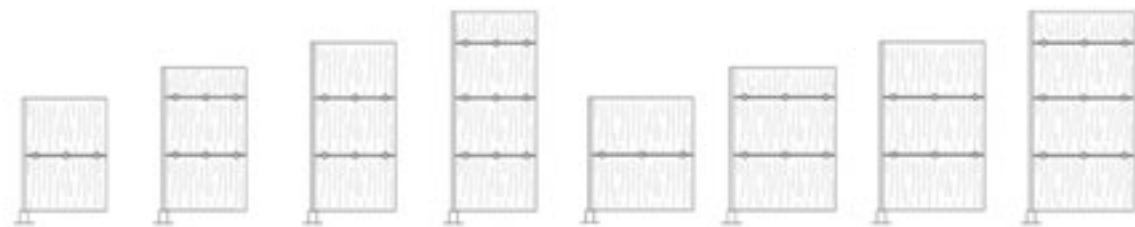


<i>Cd</i>	SL8MF2	SL8MF2/1	SL8MF3	SL8MF3/1	SL10MF2	SL10MF2/1	SL10MF3	SL10MF3/1
<i>Dm cm</i>	93 x h126	93 x h153	93 x h181	93 x h209	113 x h126	113 x h153	113 x h181	113 x h209
<i>Dm inch</i>	36,61 x h49,61	36,61 x h60,24	36,61 x h71,26	36,61 x h82,28	44,49 x h49,61	44,49 x h60,24	44,49 x h71,26	44,49 x h82,28
<i>Ba</i>	NG-GG	NG-GG	NG-GG	NG-GG	NG-GG	NG-GG	NG-GG	NG-GG



materiale flessibile 0°-360°
flexible material

LEGNO / WOOD
AS-WE-CH



<i>Cd</i>	SL8LF2	SL8LF2/1	SL8LF3	SL8LF3/1	SL10LF2	SL10LF2/1	SL10LF3	SL10LF3/1
<i>Dm cm</i>	93 x h126	93 x h153	93 x h181	93 x h209	113 x h126	113 x h153	113 x h181	113 x h209
<i>Dm inch</i>	36,61 x h49,61	36,61 x h60,24	36,61 x h71,26	36,61 x h82,28	44,49 x h49,61	44,49 x h60,24	44,49 x h71,26	44,49 x h82,28
<i>Ba</i>	NG-GG	NG-GG	NG-GG	NG-GG	NG-GG	NG-GG	NG-GG	NG-GG

PANNELLI LEGNO
WOOD PANELS
materiale flessibile 0°-360°
flexible material



<i>Cd</i>	SL10LF	SL10/2LF	SL8LF	SL8/2LF
<i>Dm cm</i>	99 x h55	99 x h27	79 x h55	79 x h27
<i>Dm inch</i>	38,98 x h21,65	38,98 x h10,63	31,10 x h21,65	31,10 x h10,63
<i>Co</i>	AS-WE-CH	AS-WE-CH	AS-WE-CH	AS-WE-CH

PANNELLI PANELS PANNEAUX BESPAUNUNG PANELES	PVC	TEXTURE PUNTI DOTS TEXTURE	TEXTURE QUADRI CHECKS TEXTURE	TEXTURE RIGHE LINES TEXTURE	TEXTURE OPTICAL OPTICAL TEXTURE	TEXTURE MOSAICO MOSAIC TEXTURE	METAL	MICROFORATO MICROPERFORATED
	0°-360°	0°-360°	0°-360°	0°-360°	0°-360°	0°-360°	0°-3°	0°-20°
<i>Cd</i>	SL10P	SL10PSA	SL10PSQ	SL10PSR	SL10PST	SL10PMO	SL10M	SL10MF
<i>Dm cm</i>	99 x h55	99 x h55	99 x h55	99 x h55	99 x h55	99 x h55	99 x h55	99 x h55
<i>Dm inch</i>	39,98 x h21,65	39,98 x h21,65	39,98 x h21,65	39,98 x h21,65	39,98 x h21,65	39,98 x h21,65	39,98 x h21,65	39,98 x h21,65
<i>Co</i>	▲ BI-GR-OP-TR-FT ■ TR	■ TR	■ TR	■ TR	■ NE-RO-VA-BL-AR	■ BI-VL-AZC-BA	■ NG-GG	■ NG-GG

<i>Cd</i>	SL10/2P	SL10/2PSA	SL10/2PSQ	SL10/2PSR	SL10/2PST	SL10/2PMO	SL10/2M	SL10/2MF
<i>Dm cm</i>	99 x h27	99 x h27	99 x h27	99 x h27	99 x h27	99 x h27	99 x h27	99 x h27
<i>Dm inch</i>	39,98 x h10,63	39,98 x h10,63	39,98 x h10,63	39,98 x h10,63	39,98 x h10,63	39,98 x h10,63	39,98 x h10,63	39,98 x h10,63
<i>Co</i>	▲ BI-GR-OP-TR-FT ■ TR	■ TR	■ TR	■ TR	■ NE-RO-VA-BL-AR	■ BI-VL-AZC-BA	■ NG-GG	■ NG-GG

<i>Cd</i>	SL8P	SL8PSA	SL8PSQ	SL8PSR	SL8PST	SL8PMO	SL8M	SL8MF
<i>Dm cm</i>	79 x h55	79 x h55	79 x h55	79 x h55	79 x h55	79 x h55	79 x h55	79 x h55
<i>Dm inch</i>	31,10 x h21,65	31,10 x h21,65	31,10 x h21,65	31,10 x h21,65	31,10 x h21,65	31,10 x h21,65	31,10 x h21,65	31,10 x h21,65
<i>Co</i>	▲ BI-GR-OP-TR-FT ■ TR	■ TR	■ TR	■ TR	■ NE-RO-VA-BL-AR	■ BI-VL-AZC-BA	■ NG-GG	■ NG-GG

<i>Cd</i>	SL8/2P	SL8/2PSA	SL8/2PSQ	SL8/2PSR	SL8/2PST	SL8/2PMO	SL8/2M	SL8/2MF
<i>Dm cm</i>	79 x h27	79 x h27	79 x h27	79 x h27	79 x h27	79 x h27	79 x h27	79 x h27
<i>Dm inch</i>	31,10 x h10,63	31,10 x h10,63	31,10 x h10,63	31,10 x h10,63	31,10 x h10,63	31,10 x h10,63	31,10 x h10,63	31,10 x h10,63
<i>Co</i>	▲ BI-GR-OP-TR-FT ■ TR	■ TR	■ TR	■ TR	■ NE-RO-VA-BL-AR	■ BI-VL-AZC-BA	■ NG-GG	■ NG-GG

PANNELLI PVC 0°-360°
STAMPA DIGITALE
PVC PANEL 0°-360°
WITH DIGITAL PRINT

<i>Cd</i>	SL10PT	SL10PT	SL10PT	SL10PT	SL10PT	SL10/2PT	SL10/2PT	SL10/2PT
<i>Dm cm</i>	99 x h55	99 x h55	99 x h55	99 x h55	99 x h55	99 x h27	99 x h27	99 x h27
<i>Dm inch</i>	39,98 x h21,65	39,98 x h21,65	39,98 x h21,65	39,98 x h21,65	39,98 x h21,65	39,98 x h10,63	39,98 x h10,63	39,98 x h10,63
<i>Co</i>	● S2	● S3-S4	● S7	● S5	● S6	● S7	● S5	● S6

montante alluminio satinato
upright
montant
Ppost
montantes

<i>Cd</i>	SLM12	SLM16	SLM18	SLM22	SLM/R12	SLM/R16	SLM/R18	SLM/R22
<i>Dm cm</i>	Ø25-Ø3 x h126	Ø25-Ø3 x h153	Ø25-Ø3 x h181	Ø25-Ø3 x h209	Ø25-Ø3 x h126	Ø25-Ø3 x h153	Ø25-Ø3 x h181	Ø25-Ø3 x h209
<i>Dm inch</i>	Ø9,84-Ø1,18 x h49,61	Ø9,84-Ø1,18 x h60,24	Ø9,84-Ø1,18 x h71,26	Ø9,84-Ø1,18 x h82,28	Ø9,84-Ø1,18 x h49,61	Ø9,84-Ø1,18 x h60,24	Ø9,84-Ø1,18 x h71,26	Ø9,84-Ø1,18 x h82,28
<i>Ba</i>	NG-GG	NG-GG	NG-GG	NG-GG	NG-GG	NG-GG	NG-GG	NG-GG

montante
partenza a muro
wall start upright
montant départ mur
Pposten Wandbeginn
montante
salida de pared

<i>Cd</i>	SLM/M12	SLM/M16	SLM/M18	SLM/M22	SLG	SLGLL
<i>Dm cm</i>	19-Ø3 x h126	19-Ø3 x h153	19-Ø3 x h181	19-Ø3 x h209		
<i>Dm inch</i>	7,48-Ø1,18 x h49,61	7,48-Ø1,18 x h60,24	7,48-Ø1,18 x h71,26	7,48-Ø1,18 x h82,28		
<i>Ba</i>	NG-GG	NG-GG	NG-GG	NG-GG	TR	TR

elemento di giunzione
joining element
élément d'assemblage
verbindungselement
elemento de conexión

▲ I pannelli fumè trasparenti sono in policarbonato
The panels transparent smoke grey are in polycarbonate
Les panneaux fumé transparent sont en polycarbonate
Die Bespannung transparent Dunkelgrau sind in Polycarbonat
Los paneles gris humo transparente son en policarbonato

■ Pannello serigrafato
Screen printed panel
Panneau sérigraphié
Sieb-Bespannung
Panel serigrafado

● Pannello stampa digitale
Panel with digital print
Panneau avec impression digitale
Bespannung mit Digitaldruck
Panel con impresión digital

montante alluminio satinato
upright
montant
Pfost
montantes

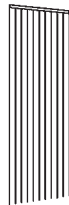


★ traversi sostegno
suspension rods
traverses pour suspendre
Gestänge
traversaños para la suspensión

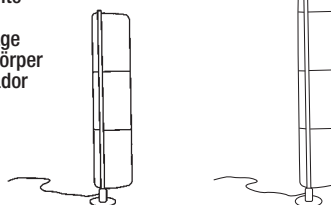
★ supporto traverso
support for rods
support pour travers
Unterstützen Gestänge
soporte de travesaño

<i>Cd</i>	SLM18/32	SLM22/32	SLTD	SLT20°	SLDIS
<i>Dm cm</i>	Ø32-Ø3 x h181	Ø32-Ø3 x h209	Ø1,4 x L.99	Ø1,4 x L.99	Ø3,5 x h3
<i>Dm inch</i>	Ø12,60-Ø1,18 x h71,26	Ø12,60-Ø1,18 x h82,28	Ø0,55 x L.38,92	Ø0,55 x L.38,92	Ø1,38 x h1,18
<i>Ba</i> Ø32 - inch. Ø12,60	GG	GG	GG	GG	GG

elemento porta
door element
élément porte
türelement
elemento puerta



corpo illuminante
lighting body
corps d'éclairage
beleuchtungskörper
cuerpo iluminador

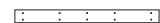
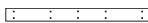
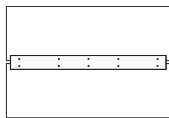


appendiabiti
coat-hangers
portemanteaux
Kleidaufhänger
colgadero



<i>Cd</i>	SL PORTA	SLC	SLC/22	SLP NG/SLP GG
<i>Dm cm</i>	80 x h209	52 x h180	52 x h209	16 x 11 x h8
<i>Dm inch</i>	31,50 x h82,28	20,47 x h70,87	20,47 x h82,28	6,30 x 4,33 x h3,15
<i>St</i>				NL-BL-WE-AS-CH
<i>Co</i>	GG	NG-GG	NG-GG	

pannello per privacy
privacy panel
privacy - panneau
privacy - Bespannung
privacy - paneel



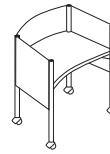
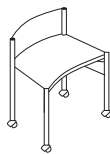
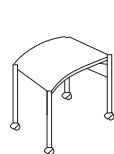
<i>Cd</i>	S.O.S.10P	S.O.S.8P	S.O.S.10M	S.O.S.8M
<i>Dm cm</i>	98 x 6,6	78 x 6,6	98 x 6,6	78 x 6,6
<i>Dm inch</i>	38,58 x 2,60	30,71 x 2,60	38,58 x 2,60	30,71 x 2,60
<i>Co</i>	BI-GR	BI-GR	NG-GG	NG-GG

Portaombrelli
umbrella stand
porte-parapluie
Schirmstander
paraguerosagujerada



<i>Cd</i>	SLPTO	SLPTOPST	SLPTOPMO
<i>Dm cm</i>	40 x 40 x h90	40 x 40 x h90	40 x 40 x h90
<i>Dm inch</i>	15,75 x 15,75 x h35,43	15,75 x 15,75 x h35,43	15,75 x 15,75 x h35,43
<i>St</i>	NG-GG	NG-GG	NG-GG
<i>Co</i>	OP	NE-RO-VA-BL	VL-AZC-BA-BI

Sistema di tavoli composto da piano tavolo in legno con gambe in alluminio satinato montate su ruote piroettanti con freno. Attrezzabili con pannelli separatori in PVC Opaline
Slalom table system with wooden table-top with satin aluminium legs on braking castors. Version with PVC Opaline partition panels installed
Système de tables composé par table en bois avec jambes en aluminium satiné sur roulettes. Panneaux séparateurs en PVC Opaline
Tischsystem mit Tisch aus Holz und eloxiertem aluminium Beim mit Rollen Trennpaneele als Opal-PVC
Sistema de mesas compuesto da el plano de apoyo en madera con patas en aluminio satinado montado sobre ruedas con freno



<i>Cd</i>	SLTV01LC	SLTV02LC	SLTV04LC
<i>Dm cm</i>	81,5 x 59 x h72	81,5 x 59 x h72/99	81,5 x 59 x h72/99
<i>Dm inch</i>	32,09 x 23,23 x h28,35	32,09 x 23,23 x h28,35/38,98	32,09 x 23,23 x h28,35/38,98
<i>St</i>	GG	GG	GG
<i>Co</i>		OP	OP

★ Programma solo per Slalom
Program only for Slalom
Programme que pour le Slalom
Programm nur für Slalom
Programa sólo para Slalom

Montanti
Uprights
Montants
Pfost
Montantes

Pannelli
Panels
Panneaux
Paneele
Paneles



GG



NG

PVC
0°-360°



TR



OP



FT

PVC
0°-360°



RIGHE



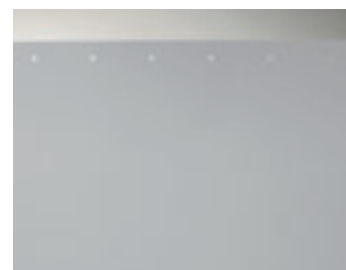
QUADRI



PUNTI

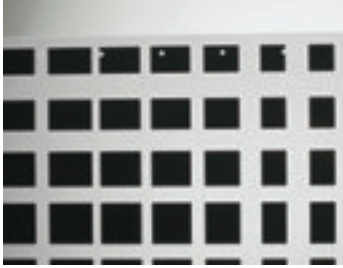


BI



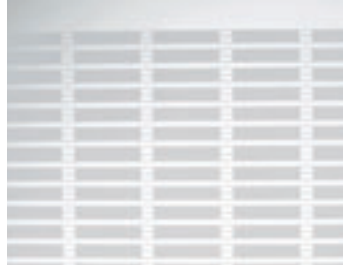
GR

PVC
0°-360°



Optical NL

PVC
0°-360°



Mosaico BI *

Metallo
0°-3°

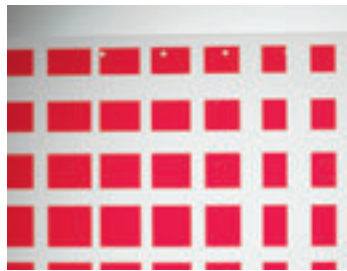


Metal GG

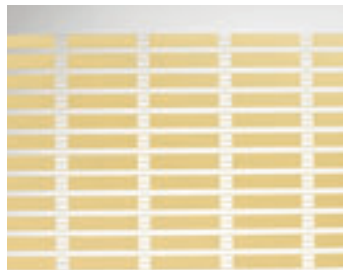
Legno
0°-360°



CH



Optical RO *

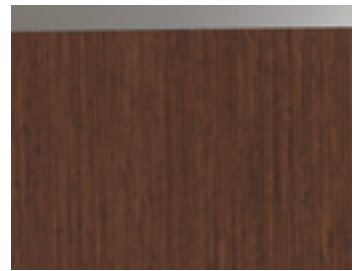


Mosaico BA *

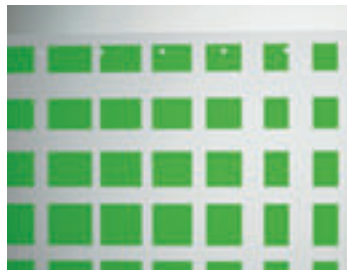
0°-20°



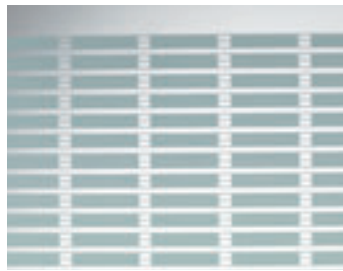
Microforato GG



WE



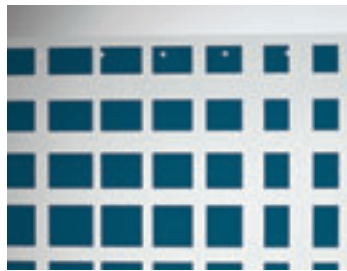
Optical VA *



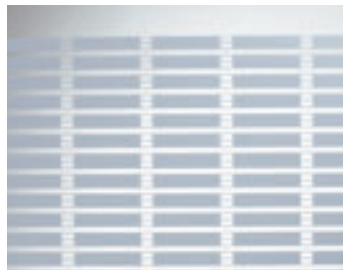
Mosaico VL *



AS



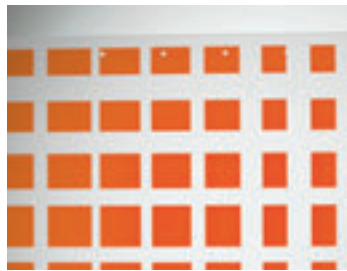
Optical BL *



Mosaico AZC *

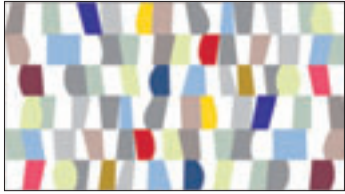


Microforato NG



Optical AR *

PVC - Textures digitali
0°-360°



S7



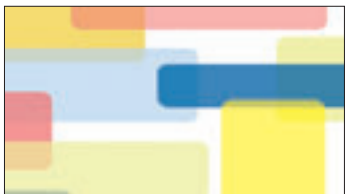
S7



S2



S5



S3



S6



S4



S5



S6

Textures "Optical, Mosaico, Righe, Quadri, Punti, Murrine, Multicolor, Mix colorati, Mix neutri, Graphical grigio, Graphical marrone".
Creazione: dpu

*** I pannelli indicati possono avere variazioni di colore con illuminazione naturale o artificiale.**

The panels indicated can have changes of colour with natural or artificial light.

Les panneaux indiqués peuvent avoir variations de couleur avec éclairage naturel ou artificiel.

Die gezeichneten Paneele könnten chromatischen Änderungen mit natürlicher oder künstlicher Beleuchtung erleiden.

Los paneles indicados pueden presentar variaciones de color con iluminación natural o artificial.